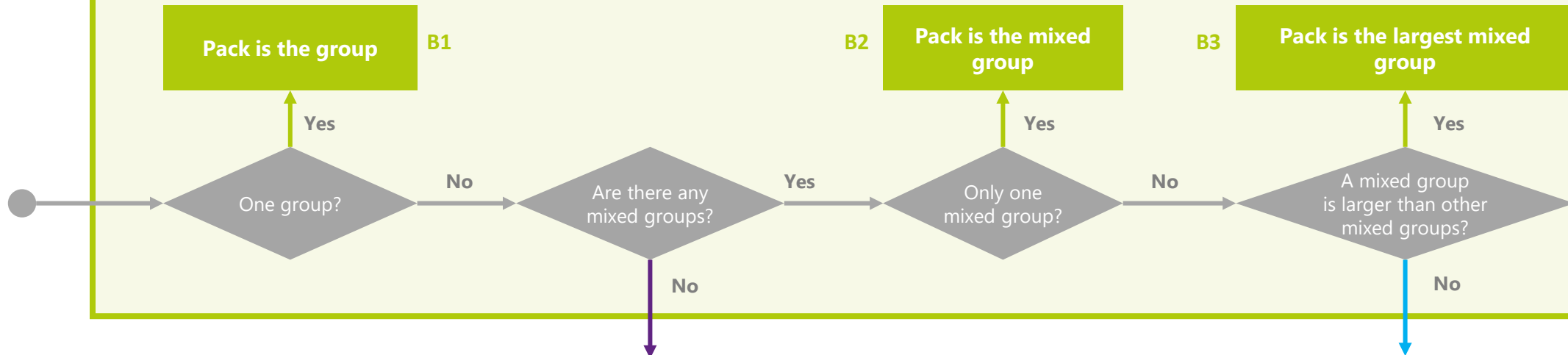


PACK DEFINITION



BASIC DEFINITION



Pack is most forward group with all blockers from a team

When two (2) or more groups of Blockers exclusively comprise players from the same team, the Pack is the group comprising all Blockers on a team and positioned most forward on the track.

EXTENSION 1

Pack is the largest and most forward mixed group

When two (2) or more groups of Blockers comprise an equal number of players, the Pack is the largest group with Blockers from both teams and most forward on the track.

EXTENSION 2

- Groups are determined by proximity (3m/10ft)
- Mixed groups have blockers from both teams
- Team groups only have blockers from the same team

Copyright © World Skate 2019

This publication may not be reproduced or translated in whole or in part in any manner without the explicit permission of World Skate

8 BLOCKERS IN GROUPS







2 groups		
Back	Front	Definition
2	6	B3
2-S	6	B2
3	5	B3
3-S	5	B2
4	4	E2
4-S	4-S	E1
5	3	B3
5	3-S	B2
6	2	B3
6	2-S	B2

3 groups			
Back	Middle	Front	Definition
2	2	4	B3
2-S	2-S	4-S	E1
2-S	2	4	B3
2	2-S	4	B3
2	3	3	E2
2	3-S	3-S	B2
2-S	3	3-S	B2
2-S	3-S	3	B2
2	4	2	B3
2-S	4-S	2-S	E1
2	4	2-S	B3
2-S	4	2	B3
3	2	3	E2
3-S	2-S	3	B2
3	2-S	3	E2
3-S	2	3-S	B2
3	2-S	3-S	B2
3	3	2	E2
3	3	2-S	E2
3-S	3	2-S	B2
3	3-S	2-S	B2
3-S	3-S	2	B2
4	2	2	B3
4	2	2-S	B3
4	2-S	2	B3
4-S	2-S	2-S	E1

4 groups				
Back	MidBack	MidFront	Front	Definition
2	2	2	2	E2
2-S	2-S	2-S	2-S	
2-S	2-S	2	2	E2
2	2-S	2-S	2	E2
2	2	2-S	2-S	E2
2	2-S	2	2-S	E2
2-S	2	2-S	2	E2
2-S	2	2	2-S	E2

-S
When a number has this prefix, it means that the group exclusively comprises blockers from the same team. Numbers without this are assumed to represent mixed groups.

-  **BASIC DEFINITION**
The Pack shall be the largest group of Blockers comprising players from both teams in proximity to one another, excluding Scorers.
-  **EXTENSION 1**
When two or more groups of Blockers exclusively comprise players from the same team, the Pack is the group comprising all Blockers on a team and positioned most forward on the track.
-  **EXTENSION 2**
When two or more groups of Blockers comprise an equal number of players, the Pack is the largest group with Blockers from both teams and most forward on the track.
-  **NOT DEFINED**
In this situation the pack cannot be defined momentarily. There will be no engagement, but no penalties will be assessed.

7 BLOCKERS IN GROUPS



2 groups		
Back	Front	Definition
2	5	B3
2-S	5	B2
3	4	B3
3-S	4	B2
3-S	4-S	E1
4	3	B3
4	3-S	B2
4-S	3-S	E1
5	2	B3
5	2-S	B2

3 groups			
Back	Middle	Front	Definition
2	2	3	B3
2	2-S	3-S	B2
2-S	2-S	3	B2
2-S	2-S	3-S	E1
2-S	2	3-S	B2
2	3	2	B3
2	3-S	2-S	B2
2-S	3	2-S	B2
2-S	3-S	2-S	E1
3	2	2	B3
3-S	2-S	2	B2
3-S	2	2-S	B2
3	2-S	2-S	B2



BASIC DEFINITION

The Pack shall be the largest group of Blockers comprising players from both teams in proximity to one another, excluding Scorers.



EXTENSION 1

When two or more groups of Blockers exclusively comprise players from the same team, the Pack is the group comprising all Blockers on a team and positioned most forward on the track.



EXTENSION 2

When two or more groups of Blockers comprise an equal number of players, the Pack is the largest group with Blockers from both teams and most forward on the track.

-S

When a number has this prefix, it means that the group exclusively comprises blockers from the same team. Numbers without this are assumed to represent mixed groups.

6 BLOCKERS IN GROUPS



2 groups		
Back	Front	Definition
2	4	B3
2-S	4	B2
2-S	4-S	E1
3	3	E2
3-S	3-S	E1
3	3-S	B2
3-S	3	B2
4	2	B3
4	2-S	B2
4-S	2-S	E1

3 groups			
Back	Middle	Front	Definition
2	2	2	E2
2-S	2-S	2-S	*
2-S	2-S	2	B2
2-S	2	2	E2
2-S	2	2-S	B2
2	2-S	2-S	B2
2	2	2-S	E2

* Depends on the position of the two players of the team that only has two active blockers



BASIC DEFINITION

The Pack shall be the largest group of Blockers comprising players from both teams in proximity to one another, excluding Scorers.



EXTENSION 1

When two or more groups of Blockers exclusively comprise players from the same team, the Pack is the group comprising all Blockers on a team and positioned most forward on the track.



EXTENSION 2

When two or more groups of Blockers comprise an equal number of players, the Pack is the largest group with Blockers from both teams and most forward on the track.

-S

When a number has this prefix, it means that the group exclusively comprises blockers from the same team. Numbers without this are assumed to represent mixed groups.

5 BLOCKERS IN GROUPS



2 groups		
Back	Front	Definition
2	3	B3
2-S	3-S	E1
2	3-S	B2
2-S	3	B2
3	2	B3
3-S	2-S	E1
3-S	2	B2
3	2-S	B2

BASIC DEFINITION
The Pack shall be the largest group of Blockers comprising players from both teams in proximity to one another, excluding Scorers.

EXTENSION 1
When two or more groups of Blockers exclusively comprise players from the same team, the Pack is the group comprising all Blockers on a team and positioned most forward on the track.

EXTENSION 2
When two or more groups of Blockers comprise an equal number of players, the Pack is the largest group with Blockers from both teams and most forward on the track.

-S When a number has this prefix, it means that the group exclusively comprises blockers from the same team. Numbers without this are assumed to represent mixed groups.

4 BLOCKERS IN GROUPS



2 groups		
Back	Front	Definition
2	2	E2
2	2-S	B2
2-S	2	B2
2-S	2-S	E1

- BASIC DEFINITION**
 The Pack shall be the largest group of Blockers comprising players from both teams in proximity to one another, excluding Scorers.

- EXTENSION 1**
 When two or more groups of Blockers exclusively comprise players from the same team, the Pack is the group comprising all Blockers on a team and positioned most forward on the track.

- EXTENSION 2**
 When two or more groups of Blockers comprise an equal number of players, the Pack is the largest group with Blockers from both teams and most forward on the track.

-S When a number has this prefix, it means that the group exclusively comprises blockers from the same team. Numbers without this are assumed to represent mixed groups.